

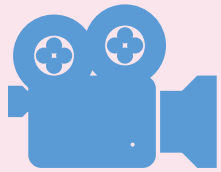
BUDDIES PROJECT SESSION 5

Community-based Participatory Action Research (CBPAR)

Thursday, October 19, 2023



HOUSKEEPING



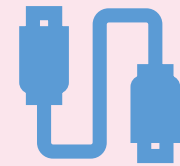
Recording didactic
presentation and
BUDDIES updates



Closed captioning
available, if needed



Please keep
cameras on, if
possible



IT issues?
Let us know via
Zoom chat

AGENDA



1. BUDDIES Overview & Updates
2. CBPAR Presentation
3. Q & A
4. Wisconsin Case Presentation & Group Discussion
5. Wrap Up & Next Session

WHO ARE YOUR BUDDIES?



Partnerships For Health (PFH) Team



Michelle Mitchell
Facilitator



Michelle Munsey
Project Manager



Chad Mitchell
IT / Tech Support

Building Utilization-focused Developmental Disabilities Impact Evaluation Skills Project



- Bi-monthly 1.5 hour trainings
- Opportunity for DD Councils to present their evaluation for feedback
- Evaluation resources and tools



- Individual evaluation services
- Focus on performance measures

Together we can build your skills to
conduct internal evaluations and
share the impact of your work.



BUDDIES OBJECTIVES



1. Increase evaluative thinking
2. Build internal evaluation structures
3. Increase ability to tell your story
4. Increase evaluation technical skills, including planning, theoretical frameworks, data collection and analysis
5. Increase collaboration and learning from other Councils

2023 / 2024 SESSION TOPICS



SESSION	DATE	TOPIC
6	December 14, 2023	Internal vs. External Evaluation
7	February 15, 2024	Types of Evaluations
8	April 18, 2024	Study Designs
9	July 19-21, 2024 (exact date TBD) In person as part of Annual TA Institute	Success Stories & Tips for Community Engagement
10	September 19, 2024	Quantitative & Qualitative Data Collection

CASE PRESENTATIONS



Recruitment open
for 2024 case
presentations

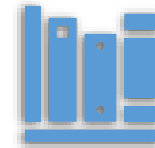


Anonymous case
presentations



PURPOSE

Provide space for
Councils to share
about evaluation
activities



TOPICS

Can present on
ANY evaluation
on ANY topic



BENEFITS

Feedback from
content experts &
learn from peers

Sign Up Now!

<https://app.smartsheet.com/b/form/b603ce4c2c3549af82fdf5edaad70019>

COMMUNITY-BASED
PARTICIPATORY
ACTION RESEARCH



COMMUNITY ENGAGEMENT IN EVALUATION



WHAT IS CBPAR?

Community-**B**ased **P**articipatory **A**ction **R**esearch

An approach to research and evaluation that involves active collaboration with community members at all phases of research, from coming up with the research questions, to developing tools to collect data, to analyzing the data and sharing the results.

COMMUNITY BASED

ACTION BASED AND ORIENTED

PARTICIPATORY

PRINCIPLES OF CBPAR



Community knowledge cannot be created without community input. Community voices provide data grounded in truth.

Complex issues cannot be understood or resolved by 'expert' research alone – **solutions require the community.**

Communities should have **equal opportunity** to be part of research and solving the issues that impact them.

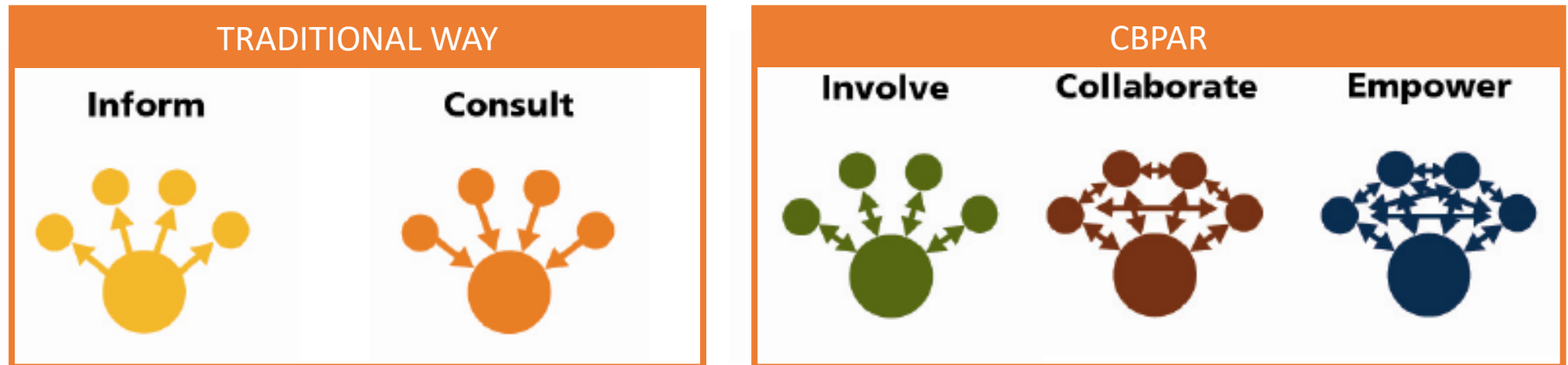
The **knowledge** of individuals, families, and other community members is **valuable.**

CBPAR IN ACTION

Impact of training on self-advocates.

1. Evaluation question(s)
2. Methodology – survey, interviews, etc.
3. Data collection
4. Analysis and interpretation
5. Findings

} 5 steps of evaluation



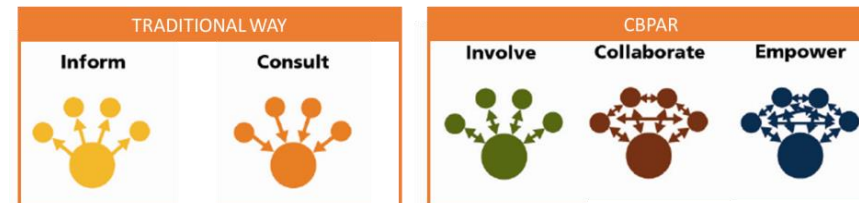
IMPACT OF TRAINING ON SELF-ADVOCATES

1. Evaluation Questions

- What is the issue?
- What are the questions we would like to answer?
- What do we want to know?
- What do we want to bring attention to?

2. Methodology

- How much information do we want?
- What kind of information do we want?
- Would individualized data tools be best?



3. Data Collection

- What is the best format?
- How do we ensure safety and confidentiality?
- Who are the best people to collect data?
- What is the appropriate timing to collect data?

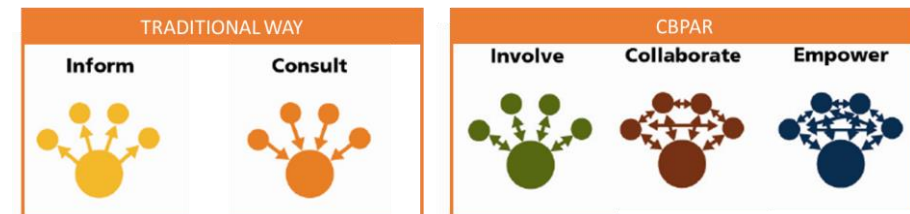
IMPACT OF TRAINING ON SELF-ADVOCATES

4. Analysis and Interpretation

- Were there any surprises or gaps?
- Were there any consequences of the evaluation we didn't expect?
- Did any patterns emerge?

5. Findings

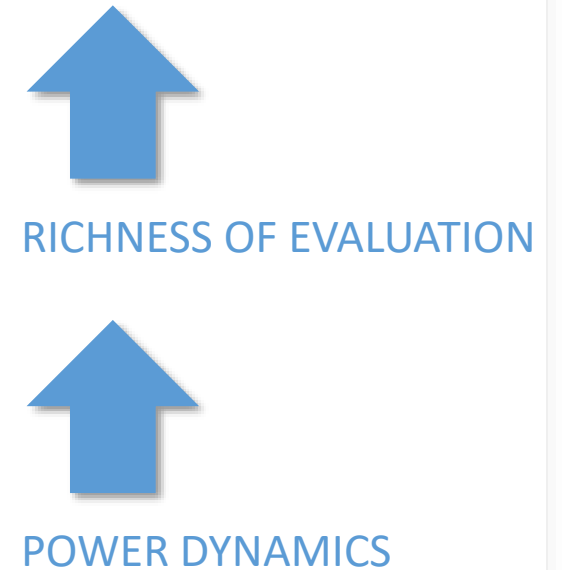
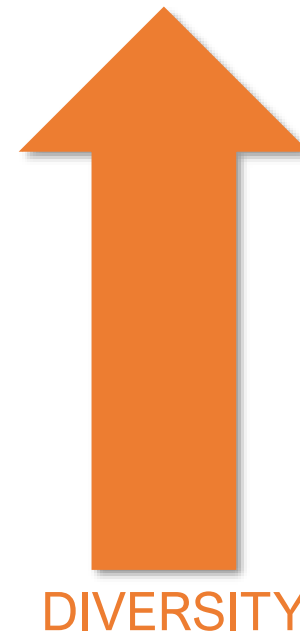
- What is the story we are trying to tell?
- What do we want to show?
- Who do we want to share the results with?



THINGS TO CONSIDER

Impact of training on self-advocates.

- World views
- Experiences
- Stereotypes
- Ways of making meaning
- Values
- Communication styles



LET'S CHAT!

When it comes to the CBPAR approach...

What makes you excited?

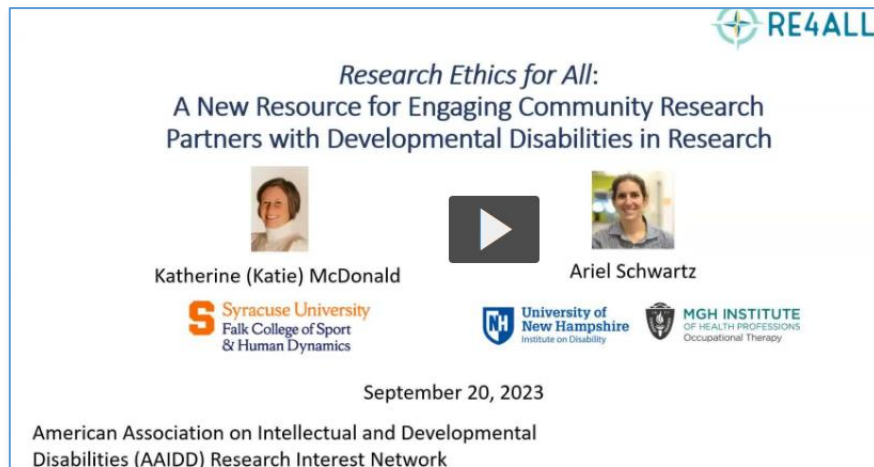
What makes you anxious?

How can PFH / BUDDIES help?

LEARN MORE!


[Research Ethics for All: A New Resource for Engaging Community Research Partners with Developmental Disabilities](#)


[PCORI Engaging People with Intellectual and Developmental Disabilities in Research](#)




RE4ALL


Research Ethics for All:
A New Resource for Engaging Community Research Partners with Developmental Disabilities in Research


 Katherine (Katie) McDonald



 Ariel Schwartz

 Syracuse University
Falk College of Sport & Human Dynamics

 University of New Hampshire
Institute on Disability

 MGH INSTITUTE OF HEALTH PROFESSIONS
Occupational Therapy

September 20, 2023

American Association on Intellectual and Developmental Disabilities (AAIDD) Research Interest Network



Engaging People with Intellectual and Developmental Disabilities in Research

November 18, 2021
3:20 PM - 4:20 PM ET

50:31 RE4ALL Nov. 17-19, 2021



QUESTIONS?
COMMENTS?
CLARIFICATIONS?





CASE PRESENTATION



WISCONSIN PRESENTATION



Wisconsin Board for People with Developmental Disabilities

Molly Cooney
Program & Policy Analyst

- ✓ Dissemination of innovation grants to diverse partners
- ✓ Describing and defining key terms, like community inclusion
- ✓ Promoting equity in grantee selection
- ✓ Scoring grant applications

SESSION WRAP-UP



NEXT SESSION: Thursday, December 14, 2023, from 3:00 – 4:30 PM EST

TOPIC: Internal vs. External Evaluation

POST-SESSION SURVEY: Take 5 minutes to provide feedback on today's session!

CONTACT US



Michelle.Mitchell@PartnershipsForHealth.org



Chad.Mitchell@PartnershipsForHealth.org



MMunsey@PartnershipsForHealth.org